

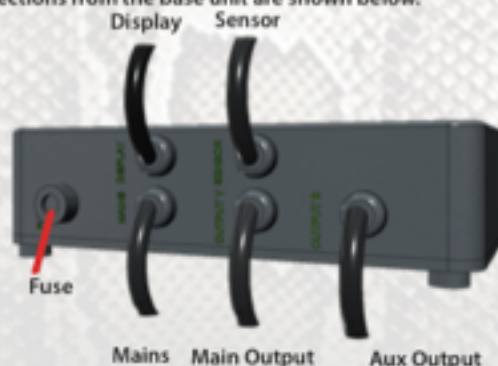


EVO

Thank you for choosing a Microclimate EVO Touch screen thermostat. All Microclimate products are designed and manufactured in England to the highest quality and all individually tested. Please read these instructions before using your thermostat. The Main (Yellow) output is colour coded with a yellow band and can be configured to control as Dimming, Pulse or On/Off control. The Aux (Blue) output is colour coded with a blue band and can be configured as an on/off thermostat or On/Off Switch control. When setting up your thermostat please set the time first.

The total load is 1200w split to a maximum of 600w per channel.

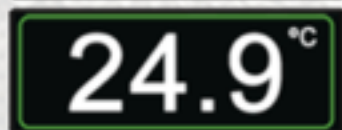
The connections from the base unit are shown below.



To access the main menu touch the output settings area of the display.



To access the 24 hr temperature history display graph touch the current temperature area of the display.



Main Menu



Home Touch to Return to the Home Menu.



General Settings
Touch to enter the settings menu.



Thermostat unlocked
Touch to Lock the thermostat.



Main Output
Touch to enter the main output settings menu.



Thermostat Locked
Hold to Unlock the thermostat.



Aux Output
Touch to enter the Aux output settings menu.



Alarm Activated
Touch to silence alarm.



General Settings



- Thermostat Name - Allows the thermostat name to be customised.
- Time - Sets the thermostats time.
- Sound - Key click and Alarm beep can be enabled or disabled.
- Alarms - Low and High Alarm temperatures can be set. The thermostat will provide audible and visual alerts if the temperature drops below the low alarm temp or rises above the High alarm temp.
- Display -Units - Measurement can be toggled between °C and °F
- invert - Allows the screen to be rotated 180° to provide the option to allow the cable to exit the display on the left or right hand side of the display.
- Sleep - Sleep mode will turn the display off if there is no user input for a set period of time. If the display is in sleep mode the first press on the display or an activated alarm will awaken the display. Options for sleep mode are NEVER, 1 Min, 10 Min or 1 Hour.
- Reset- Reset to Factory default settings.



Channel Settings Menu



To set up the main or the aux channel select the yellow (Main) or blue (Aux) lizard icon from the main menu. The menu will be displayed in Yellow whilst editing the Main output setting and in Blue when editing the Aux output settings.

- Name - Allows customisation of the channel name that appears on the home screen.
 - Setup - Channel control settings to select output type, timing, control type.
- The input data underneath the Name and Setup buttons changes depending on the options that are selected in the Setup menu.
- Press the Ok button so save your selection and return to the previous menu.



Channel Settings - Setup



- Output - Dimmer (Main Output Only)
Pulse (Main Output Only)
On/Off
- Timing- Constant - One temperature or setting continuously
- Day/Night- Day and Night can have individual settings
- Multi- 4 individual temperatures or 8 On/Off settings over 24 hours.
- Periodic- Only available on Aux channel. Allows the output to be activated for a set period of time at intervals throughout the 24hr cycle between set hours. Perfect for use with Misting systems.
- Control- Heating- Channel operates as a Heating Thermostat
- Cooling- Channel operates as a Cooling thermostat
- Fixed- Channel operates as a Fixed value.
No temperature control in Fixed mode.
Used for switching devices on/off (lighting) or can be used on the dimming mode to provide a fixed % of output.



Constant



Constant control is used when only one temperature or setting is required in the 24hr cycle.

To set the temperature simply touch the temperature displayed on the right hand side of the screen. Enter the temperature you require then touch OK.





Multi



Multi mode allows 4 different periods of temperature control in the 24hour cycle. This allows you to create an even more realistic climate than the day and night mode. For example you can set different temperatures for Morning, Midday, Evening and Night. Not all periods have to be used.

To delete a period select a period and delete the time.

Touch a time slot from the left hand side of the display and enter the time you would like a new period to start. Periods are automatically rearranged in order of time. Then touch the temperature to the right hand side of the period that you have just set and enter the temperature.

Time- The start time for the period.
Temperature- The control temperature for the period.

This feature is also available for On/Off switching. There are 8 On or Off settings in the 24hour cycle.



Day & Night



Day and Night mode allows you to create a realistic micro climate inside your vivarium. By selecting a different temperature for day-time and night-time it will allow your animal to experience the natural temperature changes that occur in the wild.

Enter the time you would like the day-time to begin, then select the temperature for day-time. Then enter the start time for night-time and select the temperature for night-time.

Time- The start time for the period.
Temperature- The control temperature for the period.



24hr Temperature History



To access the 24 hr temperature history display graph touch the current temperature area of the display.

24.9 °C

The 24hr temperature history display is useful for monitoring your heating requirements. It will allow you to see how quickly the temperature has changed when heating from cold for example. In the event of a failed heater it will also allow you to see how long ago the temperature started to drop. The graph is continuously updated whilst the Evo is switched on and is updated from the right hand side of the screen. 0 on the time axis is the most current update.



Periodic



Periodic mode can only be selected on the Aux (Blue Channel).

Periodic mode can be used to activate the output for a specific duration at set intervals. A start and end time can be set to allow you to choose the hours that the activations happen. This is useful when a mister needs to be controlled. For example if you would like to mist for 10 seconds every hour between 07:00 and 20:00 the following settings would be used. Start - 07:00, Finish - 20:00, Interval - 01:00 and duration 10s.

Start-Finish- The start time for activations.
The time that no more activations should occur.
Interval - Duration- The time between the output being activated. Time in seconds the output is activated.

Your Microclimate Evo is covered by our 5 year parts & labour warranty. If you believe your thermostat is not working correctly please call or email us as we may be able to help over the phone. If your thermostat needs to be repaired in the first 12 months there is no charge. If the thermostat is between 12 months and 5 years old there is a charge of £10 to cover the return delivery and paperwork.

Microclimate International
Unit 3 Heathmill Enterprise Centre

Heathmill Road
Wombourne
West Midlands
WV5 8AP

01902 895351

sales@microclimate.co.uk



WWW.MICROCLIMATE.CO.UK

FUSE

The Evo base unit is fitted with a 5 Amp FF super fast fuse. This is a user servicable part and is available in Microclimate Fuse Packs from your retailer.

The fuse is fitted to protect against faults external to the thermostat. This could be caused by bad connections such as bulb holders or sub standard bulbs.

If you have no output from the main channel but the thermostat is showing power being sent to the main channel then check to see if the fuse is blown.

Simply unplug the thermostat from the mains, unscrew the fuse holder from the back of the EVO base unit and replace with a 5amp FF (super fast fuse) a normal speed fuse will not act quickly enough to protect the thermostat in the event that an external item that is connected to the thermostat malfunctions.

DO NOT REPLACE THE FUSE WITH A HIGHER RATING.

IF YOU ARE UNSURE REGARDING THIS PROCESS PLEASE CALL US ON (01902) 895351 or email us sales@microclimate.co.uk

